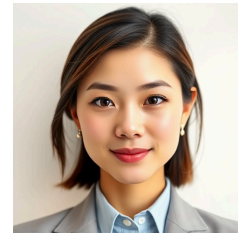


Thao Walton

(314) 555-0123 thao.walton@email.com

linkedin.com/in/thao-walton 123 Main Street, St. Louis, MO 63101



SUMMARY

Compassionate Clinical Nurse specializing in interventional radiology, committed to enhancing patient care through comprehensive assessment and collaboration with interdisciplinary teams. Proven ability to educate patients and families on treatment plans while ensuring a supportive healing environment. Employs critical nursing skills to evaluate patients' physical and psychosocial needs, fostering involvement in their own care. Demonstrates proficiency in developing and documenting individualized care plans in line with established guidelines. Actively pursues opportunities for professional development to stay informed of best practices in nursing care.

EDUCATION

Associate Degree in Nursing

2024

St. Louis Community College GPA: 3.8

St. Louis, MO

Coursework: Fundamentals of Nursing, Pharmacology, Mental Health Nursing, Pediatric Nursing

TECHNICAL SKILLS

- **Clinical Software:** Epic, Cerner, Meditech
- **Patient Monitoring Tools:** BPM Monitors, Non-invasive Monitors, Alaris Pump
- **Document Management Systems:** Electronic Health Records, EMR Platforms, Charting Software
- **Education Resources:** Teaching Aids, Patient Handbooks, Instructional Videos
- **Collaboration Tools:** Microsoft Teams, Zoom, Slack
- **Regulatory Frameworks:** HIPAA, OSHA Standards, Joint Commission Guidelines
- **Assessment Protocols:** Nursing Process, Care Plans, Daily Rounds
- **Language Proficiency Tests:** TOEFL, NCLEX-RN, Spanish Language Proficiency Test
- **Patient Engagement Tools:** Feedback Surveys, Health Portals, Follow-up Contact
- **Quality Improvement Methods:** PDSA Cycle, Root Cause Analysis, Six Sigma Principles

SKILLS

- Patient Assessment
- Healthcare Regulations
- Quality Improvement
- Interdisciplinary Teamwork
- Interventional Radiology
- Critical Thinking
- Infection Control
- Communication Strategies
- Patient Education
- Post-treatment Care
- Patient Safety
- Professional Development
- Team Collaboration
- Medication Administration
- Documentation Skills

EXPERIENCE

Clinical Nurse

January 2025 - Present

HealthFirst Medical Center

St. Louis, MO

Responsible for delivering high-quality patient care in the interventional radiology department, focusing on safety and comfort during procedures. Collaborates with multidisciplinary teams to support various aspects of patient care.

- Deliver high-quality patient care within fast-paced interventional radiology.
- Monitor vital signs and administer medications according to protocols.
- Educate patients and families on post-treatment care effectively.
- Collaborate closely with interventional radiologists to enhance procedural outcomes.
- Uphold compliance with healthcare regulations and infection control standards.
- Participate actively in quality improvement initiatives focused on safety.

Nursing Intern

June 2024 - December 2024

WellCare Clinic

St. Louis, MO

Gained valuable experience assisting in diverse clinical settings conducive to learning and professional growth. Developed effective patient communication strategies under supervision.

- Assisted in delivering patient care and conducting pre-procedure assessments.
- Monitored patients and documented information accurately in health records.
- Supported educational initiatives related to medication management.

- Collaborated with staff to evaluate nursing care plans with best practices.
- Engaged actively in meetings focused on professional development.
- Enhanced communication skills through patient and family interactions.

LEADERSHIP & AWARDS

- Graduated with Honors in Nursing
- Received Patient Care Excellence Award for outstanding service

CERTIFICATIONS

- Registered Nurse (RN) License 📅 2024
- CPR Certification 📅 2025

PROFESSIONAL AFFILIATIONS

- Member of American Nurses Association
- Volunteer at Local Health Clinics

LANGUAGES

- English (Native)
- Spanish (Intermediate)

ADDITIONAL INFORMATION

Work Status : Authorized to work in United States. No sponsorship required.

REFERENCES

AVAILABLE ON REQUEST